



Community Safety and Well-Being

SITUATION TABLE

The Broader
Picture

Understanding CSWB – Fundamental Promise

“

One of the most fundamental promises of any democratic society is the right for all members of that society to pursue their aspirations, and for each to be able to thrive and prosper to his or her full potential.

The essential purpose of our complex systems is to advance the UNDP’s global definition of Human Security for every citizen, every family, and every human enterprise ...

freedom from fear ... and freedom from want

This human services mandate can be broadly captured in the phrase

‘community safety and well-being (CSWB)’. ”

Norm Taylor, Global Network for Community Safety

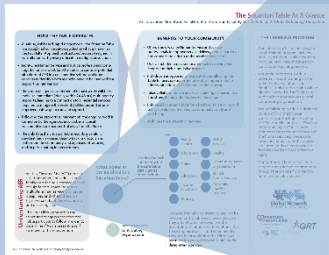
Understanding CSWB – Current Reality

“ Well-intentioned professionals have chosen to devote their careers to public service with this in mind, and with their hearts invested in their work for others. But, government/system structures and processes have not evolved to support this commitment ... in too many ways today, our structures and isolated protocols serve to undermine it.

Human service professionals are required to operate in service of their separate structures and their respective protocols, often fully aware and frequently frustrated that better ways exist. ”

Norm Taylor, Global Network for Community Safety

Overview of the Threshold of AER



Understanding AER

Acutely Elevated Risk (AER) refers to situations where individuals and/or families are facing a composite level of risks factors, spanning across multiple human service and justice disciplines, and where there is a high probability of harm occurring and occurring soon.

The Four Filter Approach is the structured triage process that the Table participants follow in order to determine if AER is present, and if so, move to the Intervention.

Source: *Global Network for Community Safety*

Four Elements of AER



- Significant interest at stake
- Probability of harm occurring
- Severe intensity of harm
- Multi-disciplinary nature of risk

*** You will continue to see AER throughout the duration of the training and when working at Table ***

Risk Tracking Variable Categories

- Alcohol
- Criminal Involvement
- Drugs
- Gambling
- Mental Health
- Physical Health
- Suicide
- Self-Harm
- Crime Victimization
- Physical Violence
- Emotional Violence
- Sexual Violence
- Elderly Abuse
- Cognitive Impairment
- Basic Needs
- Missing School
- Parenting
- Housing
- Poverty
- Negative Peers
- Anti-social behavior
- Supervision
- Unemployment
- Missing/Runaway
- Threat to Public Safety
- Gangs
- Social Environment

Risk Factors

- **Addiction (drugs/alcohol)**
- **Bereavement/Grief**
- **Pattern (aggressive behavior)**
- **Negative Peer Group**
- **Pattern (victim aggressive behavior)**
- **Violence (Dom Adult/Adult)**
- **Parental Support (lack of supervision)**
- **Violence (fighting with peers)**
- **Teen Parent (needs support)**
- **Attendance (school)**
- **Cyber Safety (aggression/victimization through tech)**
- **Housing**
- **Violence (family: parent/child, sibling/sibling)**
- **Parent/child conflict**
- **Self Harm**
- **Other (please specify)**

[CC Photo by Ismael Sánchez](#)

Understanding CSWB – The Table

How the Situation Table fits within Community Safety and Well-being (CSWB)

“All Strengths, All Perils Approach”



Law Enforcement and Public Health (LEPH)

Partnerships



Relationships



Collaboration

